

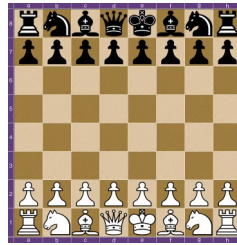
# INTRODUCTION to CHESS

Karen Hurley, HES Teacher

Grades 1-5

Register online

[www.psharvard.org](http://www.psharvard.org) "Departments" Community Education, Spectrum



Space is limited! Register early!

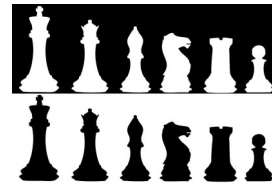
Come learn to play the exciting game of chess. **If you have limited to no experience with the game but want to figure it out, this is the place for you.**

We'll learn how the pieces move and play some fun games to reinforce the movements.

*Once you get the basics you may want to sign up for Chess Club to keep learning strategies and techniques! Lots of fun!*

Tuesday mornings 3 weeks

January 7, 14, 28, 2020



7:40-8:40 a.m.

Minimum: 6

Maximum: 8

HES Room 230

Fee: \$39

**Once a "new to chess" student has participated the Intro to Chess class, they are eligible to register for Chess Club!**

Make check payable to: Town of Harvard, 39 Mass. Ave., Harvard, MA 01451

Or pay online at [www.psharvard.org](http://www.psharvard.org) Online Payment Center (if paying online, email the Payment Confirmation Number to: [jcavanaugh@psharvard.org](mailto:jcavanaugh@psharvard.org))

Class size is limited. Registration is on a first-come first served basis office.

Please know that it is the policy of the Harvard Public Schools not to discriminate on the basis of race, color, sex, gender identity, religion, national origin, age, disability, or sexual orientation in its educational programs, activities or employment policies as required by Title IX of the 1972 Educational Amendments, Chapter 199, and Section 504 of the Rehabilitation Act of 1973. The district compliance coordinator is Marie Harrington, Director of Pupil Services, 978-456-4143.